

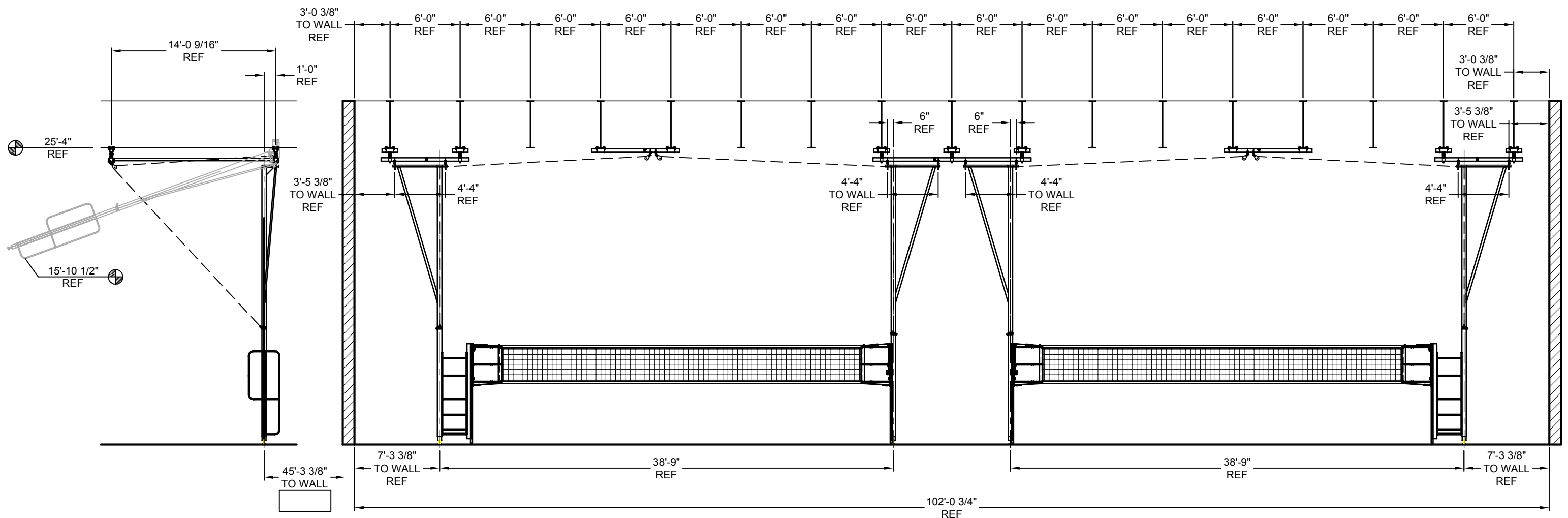
DIMENSIONS WITH BOX ARE REQUIRED TO BE VERIFIED.
PLEASE INDICATE ACTUAL DIMENSION IN BOX PROVIDED.

EQUIPMENT SCHEDULE

①② OVERHEAD VOLLEYBALL

(2ea) 8001R CEILING SUSPENDED V'BALL W/ REF STD

NOTE: PLEASE INDICATE THE LOCATIONS OF ANY OBSTRUCTIONS NOT ALREADY SHOWN, I.E. HVAC AND LIGHTS.



OVERHEAD VOLLEYBALL ELEVATION: UNITS 1 AND 2 SHOWN

DRAWN FULL SCALE, PLOTTED N.T.S.

UNIT ELEVATION

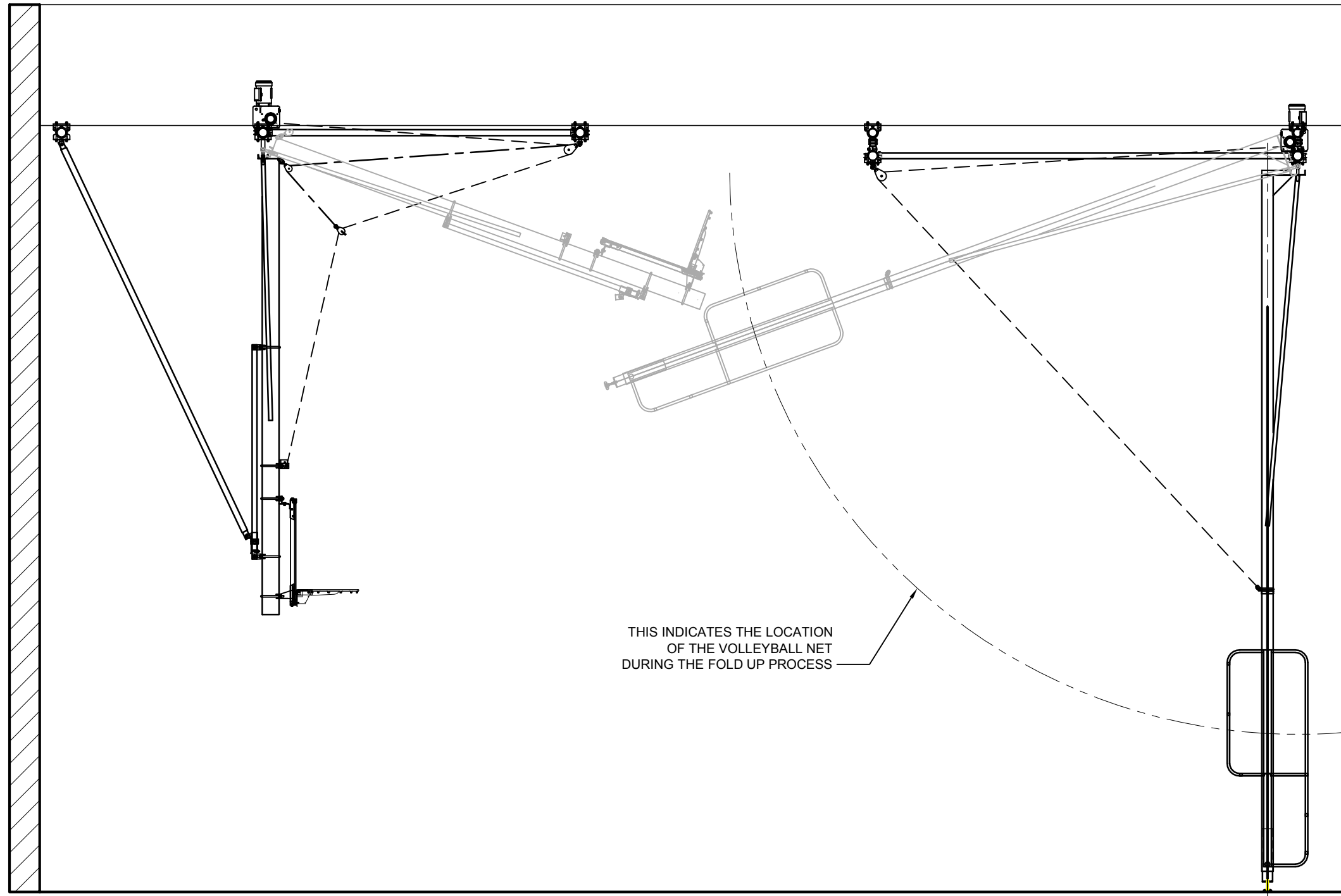
THIS DOCUMENT CONTAINS TRADE SECRET AND OTHER MATERIALS WHICH ARE PROTECTED BY CONFIDENTIALITY NOTICE AND AGREEMENT AND BY COPYRIGHT. ANY USE OR COPYING OF THIS DOCUMENT EXCEPT AS AUTHORIZED BY GARED HOLDINGS, LLC IS STRICTLY PROHIBITED.

REV.	BY	DATE	CK BY	DATE	DESCRIPTION



DRAWN BY: WAE	DATE: 07/23/08	PROJECT NAME:
CHECKED BY:	DATE:	COLUMBIA HEIGHTS GYM ADDITIONS
DEALER: H & B SPECIALIZED PRODUCTS		QUOTE #: 25982
DEALER ORDER NO.		ORDER NO.
SHEET 9 OF 12	GYM 100 AND 124	153138

DIMENSIONS WITH BOX ARE REQUIRED TO BE VERIFIED.
PLEASE INDICATE ACTUAL DIMENSION IN BOX PROVIDED.



THIS INDICATES THE LOCATION
OF THE VOLLEYBALL NET
DURING THE FOLD UP PROCESS

EQUIPMENT SCHEDULE

5x6 BASKETBALL

- (2ea) 3103-25R WELDED REAR BRACED FRONT FOLDING
- (2ea) AFRG42 ALUM FRAMED RECT GL BB
- (2ea) 2000+ COLLEGIATE BREAKAWAY GOAL
- (2ea) PMCE BOLT ON CUSHION EDGE
- (2ea) 1194 ELECTRIC HOIST - BASKETBALL
- (2ea) 1100 SAFETY LOCKING STRAP

1x2 OVERHEAD VOLLEYBALL

- (2ea) 8001R CEILING SUSPENDED V'BALL W/ REF STD

UNIT ELEVATION

REV.	BY	DATE	CK BY	DATE	DESCRIPTION



DRAWN BY: WAE	DATE: 07/23/08	PROJECT NAME:
CHECKED BY:	DATE:	COLUMBIA HEIGHTS GYM ADDITIONS
DEALER: H & B SPECIALIZED PRODUCTS		QUOTE #: 25982
DEALER ORDER NO.		ORDER NO.
SHEET 10 OF 12	GYM 100 AND 124	153138

THIS DOCUMENT CONTAINS TRADE SECRET AND OTHER MATERIALS WHICH ARE PROTECTED BY CONFIDENTIALITY NOTICE AND AGREEMENT AND BY COPYRIGHT. ANY USE OR COPYING OF THIS DOCUMENT EXCEPT AS AUTHORIZED BY GARED HOLDINGS, LLC IS STRICTLY PROHIBITED.